



THEATER GUIDELINES

The theater guidelines listed below have been established to meet the needs of our residents. Your cooperation and adjustments to your performances will be greatly appreciated.

- Videotaping is done from the booth of the theater ONLY (please notify our Technical Director Steve Cohen in advance if you plan to do so). No flash photography is allowed.
- Children under the age of 18 will NOT be permitted into the Clubhouse and/or backstage areas at any time, unless they are contracted entertainers. Please be aware that shorts are not permitted in or around any of the clubhouses after 6:00 pm.
- All performances have been contracted to run a MINIMUM of 75 minutes with a MAXIMUM of 90 minutes. Our preference is for you to not exceed the 90 minutes since our bus service is pre-scheduled. If, however, the performance will run longer or if there is an intermission, please advise us in advance.
- Please be aware that the first few rows of each theater are set aside for our visually and hearing impaired residents.
- All requests for guest tickets must come from the agent or performer prior to that night's performance and must be made during normal business hours. Two (2) comp tickets are available for each performance all others must be paid for.
- Rehearsals and sound checks must be completed one hour before the show starts. If you need the theater at an earlier time, we will make every effort to accommodate your request if we are given at least two months prior advance notification.
- Animals (unless part of the performance and agreed upon in advance), flammable materials and foreign substances are prohibited.
- We require that all performers selling merchandise to leave 2 samples of each item being sold at each venue with our emcee. Please keep in mind that we do not take a percentage of your sales and these items are for our records and/or given to someone who may have purchased damaged goods. We are not able to supply someone to sell merchandise.
- Please call Kittie Midkiff at (561) 451-1227 during our normal business hours Monday - Friday, 8:30 am to 4:30 pm if you have any questions or need special arrangements. If there is an emergency after our regular office hours, you can reach us by calling the following numbers; please make sure you call in this specific order.

Abby Koffler Cell
Kittie Midkiff Cell
Steve Cohen Cell

(561) 312-9940
(954) 805-3854
(561) 239-6727

CENTURY VILLAGE
BOCA RATON
19296 LYONS ROAD
BOCA RATON, FL 33434
561-451-1227 (P)
561-883-2624 (F)

CENTURY VILLAGE
PEMBROKE PINES
13300 SW 10TH STREET
PEMBROKE PINES, FL 33027
954-435-6001

CENTURY VILLAGE
WEST PALM BEACH
200 CENTURY BOULEVARD
WEST PALM BEACH, FL 33417
561-640-3120

Pembroke Pines - Technical Specifications

Updated 8/2018

STAGE DIMENSIONS:

Proscenium width 55'

Proscenium height 19'

Stage depth from proscenium 21'

Stage width including wing area 60'

Stage apron depth 6' 6"

Stage depth overall 27'

Throw from FOH booth to fixed upstage movie screen 122'

Fixed upstage perforated movie screen size 22' wide x 12' high, 16:9

Roll down, downstage non-perforated movie screen size 26' wide X 14' high, 16:9

Tongue and groove wood floor – 3' space then wood

3 - 78'.5" black/grey matte Harlequin reversible Marley dance floor

SOFT GOODS:

Main curtain center opening, motor-op.

1 adjustable black mid-stage traveler (actor's curtain).

1 mid-stage white scrim.

1 adjustable black up-stage traveler.

4 rose brand white hoop columns with 4 AC Chroma Q Color One LED instruments

LIGHTING:

1 - ETC ION 1500 with 2 X 20 fader wings V 2.6.0

Rear of house control (projection booth)

2 - ETC Sensor SR48 dimmer racks with 2 CEM 2+ modules, 64 D -20 dimmers, 3 R-20, Unison house light rack

All circuit 3 pin stage plug

LIGHTING INSTRUMENTS:

Front of house

4 - ETC Source 4 Lekos 19° 750w

15 - ETC Source 4 Lekos 26° 750w

4 - ECT Source 4 Lekos 36° 750w

ADDITIONAL LIGHTING (Dead Hung, Fixed):

3 Electrics

10 - 6' 3-color strip lights, 120w RGB

5 - Martin MAC 350 Entour

14 - Martin Aura

4 - Altman Spectra Cyc 200

12 - ETC Source 4 Lekos 19° 750w (boom boxes)

Follow Spot (Booth)

1 - Lycian Midget HP follow spot 575w HMI

1 - Canto 2000w quartz follow spot

DRESSING ROOMS:

2 - Chorus with 18 mirrors with close backstage access, plus private toilet and shower

2 - Lead with 1 mirror with close backstage access

AUDIO:

1 - Yamaha CL-5 console with MY8AE, MY8-AE96, V5.00

1 - Yamaha SB168 ES

1 - Yamaha Rio 3224D

1 - Yamaha Rio 1608D

Rear of house (projection booth)

Output Patch

OMIN 1-8 = Mix 1-8, Omni 11 Subwoofer, Omni 12 booth monitor, Omni 13 matrix one-assistive listening,

Omni 14 Center mono, Omni 15 Left, Omni 16 Right

Seven discrete mixes, from FOH (booth)

MICROPHONES:

4 - Shure Beta 58a

2 - Shure ULXD4Q with 8 ULXD2 with Beta 87a capsules or Beta 58a capsules. 2 Shure KSM-9HS. Frequency range G50

2 - Shure ULXD1 body packs with Shure WL 185 capsules, Shure WB98 H/C, or DPA 4088 headsets

2 - UA870USTV antennas

7 - Shure SM-57

2 - Sennheisser E-845

1 - Sennheiser E609 Silver

3 - Crown PCC-160

2 - Shure Beta 58

1 - Shure Beta 52

2 - Shure SM 137

3 - Sennheisser E 604

1- Sennheisser E 904

1 - Shure Beta 91a

1 - DPA 4099P

2 - Shure KSM 137

2 - Shure KSM 32

1 - Shure Beta 56a

MAIN ARRAY LCR:

13 - JBL VRX932LAP

2 - JBL VRX918SP

STAGE MONITORS:

2 - Meyer USM-1P

4 - Meyer UM-1P

2 - Meyer MSL-4

4 - JBL VRX 918SP

1 - EV FM-1202

1 - Community CSX 28M

2 - EAW SM122e

1- RCF 300A

2 - JBL Eon 1500

3 - JBL VTX M-22

PASSIVE MONITORS POWERED BY:

1 - Yamaha XP-5000

1 - Carver PM 600

1 - Crown I-Tech 4X3500HD

EXTRA AUDIO:

1 - Denon DN-T 620 CD-Tape Recorder

1 - Tascam CD-01U Pro CD player

3 - Sescom IL-19

1 - CB 1 Direct Boxes

1 - Whirlwind Hot Box

1 - Radial ProD2

1 - Radial J48

1 - BSS AR-133 DI

2 - Whirlwind PCDI

2 - Whirlwind Director 2

1 - Clearcom MS-702

3 - Clearcom RS-601 with CC-95z headset

ASSISTIVE LISTENING:

40 - Listen Technologies LR-42 headsets

10 - Listen Technologies LR-44 lanyards

10 - Listen Technologies LA-166 Neck loops

2 - Listen Technologies LA-140 IR radiators

1 - Listen Technologies LT-82 transmitter 2.3Mhz

PROJECTION:

1 - Barco NH-12 video projector V1.29

Oppo 105D Blu Ray player

AJA HB-T-HDMI, HB-R-HDMI

ADDITIONAL SERVICES:

1 Technician to operate the following:

Spot, lighting, sound console. Tech/house is available two hours prior to show time, or earlier with notice.

Auxiliary Power Stage Right 50 amp range receptacle, Nema 14-50R, 240 volts

Scaffolding (with prior notice)

BACKLINE:

1 - Yamaha C-7' Grand Piano with artist bench, for stage use only

1 - Fender American Standard Stratocaster electric guitar Maple Wood

1 - Fender American Standard Precision electric bass Maple Wood

1 - Takemine GD71CE acoustic/electric guitar

1 - AMPEG SVTCL bass amplifier head

1 - AMPEG SVT810e bass cabinet

1 - Fender Twin reissue blackface amplifier

1 - Fender Hot Rod Deville III 4 X 10 combo amplifier

1 - Korg Triton M388 88 key keyboard with Yamaha FC-4 sustain pedal, Boss FV 500L volume pedal

1 - Peavey KB5D amplifier

Yamaha Stage Custom Drum Set:

1 - 22" Kick

1 - 14" Floor Tom

1 - 10" Tom

1 - 12" Tom

1 - 14" Snare

Roc n Soc Bicycle thrown

Hardware

Set of Zildjian A Custom Cymbals

14" High Hats (Top and Bottom)

20" Medium Ride

16" Brilliant Crash

14" Fast Crash

Remo Coated Ambassador heads

Sticks and brushes

4 - 4' X 8' X 16" risers

8 - Manhasset music stands

1 - Manhasset Four Score music stand

8 - Music stand lights

BACKSTAGE ACCESS/HOUSE INFORMATION:

Loading dock height 50", stage level

250' snake required for FOH position

We do not have laundry or catering facilities on-site and no shore power

We have a clothes steamer, iron and ironing board, and two clothes racks

No videotaping or photography in audience house

House doors open one hour prior to show time. All sound checks must be completed by then.

Backstage GPS coordinates, 25.99627446N by -80.32448534W

House seats: 1042

For Additional Technical Information, Please Contact:

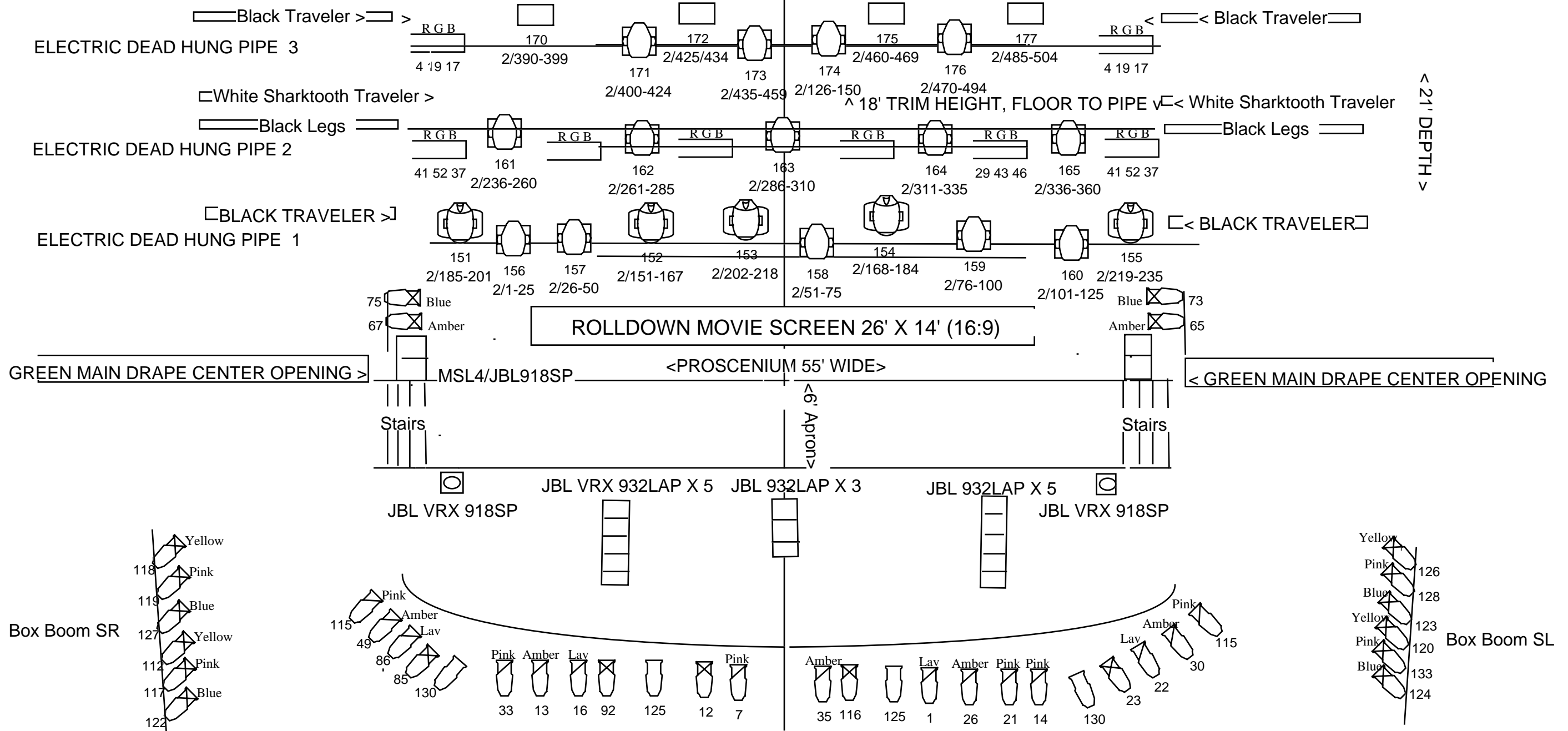
Steven Cohen - Technical Director
Century Village Theaters
19296 Lyons Road, Boca Raton, FL 33434
Office: 561-451-1227
Cell: 561-239-6727
Fax: 561-883-2624
Email: scohen@cenrec.com

For Further Booking Information, Please Contact:

Abby Koffler - Vice President Of Entertainment
Cenvill Recreation, Inc.
19296 Lyons Road, Boca Raton, FL 33434
Office: 561-451-1229
Fax: 561-883-2624
Email: akoffler@cenrec.com

Visit our website at: www.centuryvillagetheater.com for further information

CROSS OVER
UPSTAGE FIXED MOVIE SCREEN 22' X 12' (16:9)

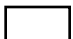
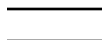



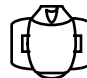
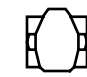


^ 21' DEPTH ^

FOH

Century Village Pembroke Pines, Repertory Plot

REVISED 8/18

-  = Altman Spectra Cyc 200
-  = RGB 6' Altman R-40 Border
-  = Source 4 19 Degree
-  = Source 4 26 Degree
-  = Source 4 36 Degree
-  = Martin 350Entour
-  = Martin AURA
- Relay = 5, 6, 39, 40
- House 134-136, 139-144
- ALL Source 4 HPL 750X



THEATER SEATING PLAN

PEMBROKE PINES



A		26	25	24	23	A	22	21	20	19	18	17	16	15	14	A	13	12	11	10	9	8	7	6	5	A	4	3	2	1	A																										
B		28	27	26	25	24	B	23	22	21	20	19	18	17	16	15	B	14	13	12	11	10	9	8	7	6	B	5	4	3	2	1	B																								
C		30	29	28	27	26	25	C	24	23	22	21	20	19	18	17	16	C	15	14	13	12	11	10	9	8	7	C	6	5	4	3	2	1	C																						
D		32	31	30	29	28	27	26	D	25	24	23	22	21	20	19	18	17	D	16	15	14	13	12	11	10	9	8	D	7	6	5	4	3	2	1	D																				
E		36	35	34	33	32	31	30	29	E	28	27	26	25	24	23	22	21	20	19	E	18	17	16	15	14	13	12	11	10	9	E	8	7	6	5	4	3	2	1	E																
F		36	35	34	33	32	31	30	29	F	28	27	26	25	24	23	22	21	20	19	F	18	17	16	15	14	13	12	11	10	9	F	8	7	6	5	4	3	2	1	F																
G		36	35	34	33	32	31	30	29	G	28	27	26	25	24	23	22	21	20	19	G	18	17	16	15	14	13	12	11	10	9	G	8	7	6	5	4	3	2	1	G																
H		38	37	36	35	34	33	32	31	30	H	29	28	27	26	25	24	23	22	21	20	H	19	18	17	16	15	14	13	12	11	10	H	9	8	7	6	5	4	3	2	1	H														
I		38	37	36	35	34	33	32	31	30	I	29	28	27	26	25	24	23	22	21	20	I	19	18	17	16	15	14	13	12	11	10	I	9	8	7	6	5	4	3	2	1	I														
J		40	39	38	37	36	35	34	33	32	J	31	30	29	28	27	26	25	24	23	22	21	J	20	19	18	17	16	15	14	13	12	11	10	J	9	8	7	6	5	4	3	2	1	J												
K		40	39	38	37	36	35	34	33	32	K	31	30	29	28	27	26	25	24	23	22	21	K	20	19	18	17	16	15	14	13	12	11	10	K	9	8	7	6	5	4	3	2	1	K												
L		42	41	40	39	38	37	36	35	34	33	L	32	31	30	29	28	27	26	25	24	23	22	L	21	20	19	18	17	16	15	14	13	12	11	L	10	9	8	7	6	5	4	3	2	1	L										
M		42	41	40	39	38	37	36	35	34	33	M	32	31	30	29	28	27	26	25	24	23	22	M	21	20	19	18	17	16	15	14	13	12	11	M	10	9	8	7	6	5	4	3	2	1	M										
N		42	41	40	39	38	37	36	35	34	33	N	32	31	30	29	28	27	26	25	24	23	22	N	21	20	19	18	17	16	15	14	13	12	11	N	10	9	8	7	6	5	4	3	2	1	N										
O		44	43	42	41	40	39	38	37	36	35	O	34	33	32	31	30	29	28	27	26	25	24	23	O	22	21	20	19	18	17	16	15	14	13	12	11	O	10	9	8	7	6	5	4	3	2	1	O								
P		46	45	44	43	42	41	40	39	38	37	36	P	35	34	33	32	31	30	29	28	27	26	25	24	P	23	22	21	20	19	18	17	16	15	14	13	12	P	11	10	9	8	7	6	5	4	3	2	1	P						
Q		46	45	44	43	42	41	40	39	38	37	36	Q	35	34	33	32	31	30	29	28	27	26	25	24	Q	23	22	21	20	19	18	17	16	15	14	13	12	Q	11	10	9	8	7	6	5	4	3	2	1	Q						
R		46	45	44	43	42	41	40	39	38	37	36	R	35	34	33	32	31	30	29	28	27	26	25	24	R	23	22	21	20	19	18	17	16	15	14	13	12	R	11	10	9	8	7	6	5	4	3	2	1	R						
S		48	47	46	45	44	43	42	41	40	39	38	37	S	36	35	34	33	32	31	30	29	28	27	26	25	S	24	23	22	21	20	19	18	17	16	15	14	13	S	12	11	10	9	8	7	6	5	4	3	2	1	S				
T		50	49	48	47	46	45	44	43	42	41	40	39	T	38	37	36	35	34	33	32	31	30	29	28	27	26	T	25	24	23	22	21	20	19	18	17	16	15	14	13	T	12	11	10	9	8	7	6	5	4	3	2	1	T		
U		50	49	48	47	46	45	44	43	42	41	40	39	U	38	37	36	35	34	33	32	31	30	29	28	27	26	U	25	24	23	22	21	20	19	18	17	16	15	14	13	U	12	11	10	9	8	7	6	5	4	3	2	1	U		
V		50	49	48	47	46	45	44	43	42	41	40	39	V	38	37	36	35	34	33	32	31	30	29	28	27	26	V	25	24	23	22	21	20	19	18	17	16	15	14	13	V	12	11	10	9	8	7	6	5	4	3	2	1	V		
W		52	51	50	49	48	47	46	45	44	43	42	41	40	W	39	38	37	36	35	34	33	32	31	30	29	28	27	W	26	25	24	23	22	21	20	19	18	17	16	15	14	W	13	12	11	10	9	8	7	6	5	4	3	2	1	W
X		50	49	48	47	46	45	44	43	42	41	40	39	X	38	37	36	35	34	33	32	31	30	29	28	27	26	X	25	24	23	22	21	20	19	18	17	16	15	14	13	X	12	11	10	9	8	7	6	5	4	3	2	1	X		
Y		H	26	25	24	23	22	H	Y	H	21	20	19	18	17	16	15	H	Y	H	14	13	12	11	10	9	8	H	Y	H	7	6	5	4	3	H	Y	H	7	6	5	4	3	H	Y												

Section A

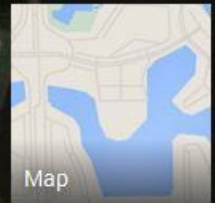
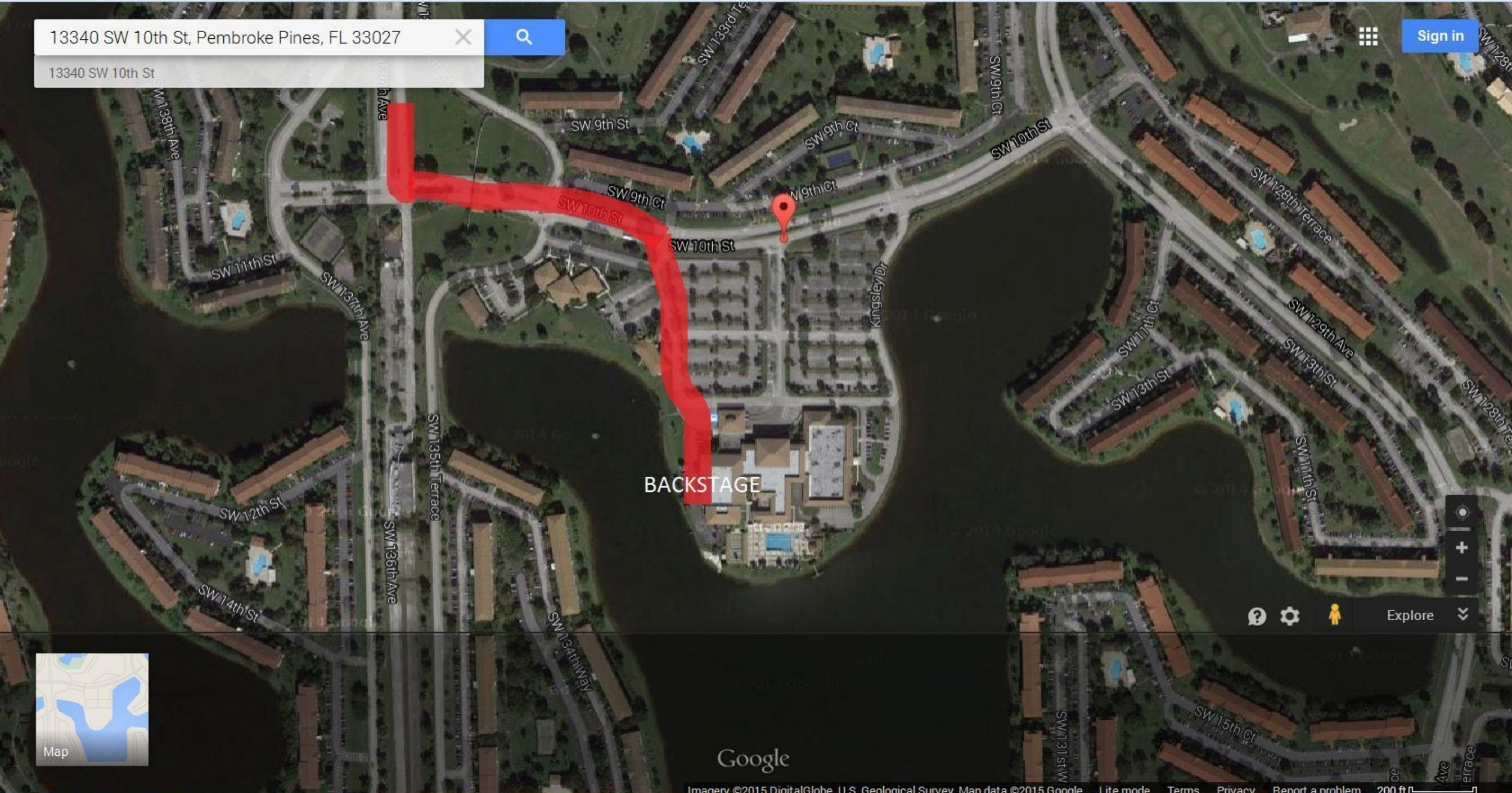
Section B

Section C

Section D

13340 SW 10th St, Pembroke Pines, FL 33027
13340 SW 10th St

Sign in



Google