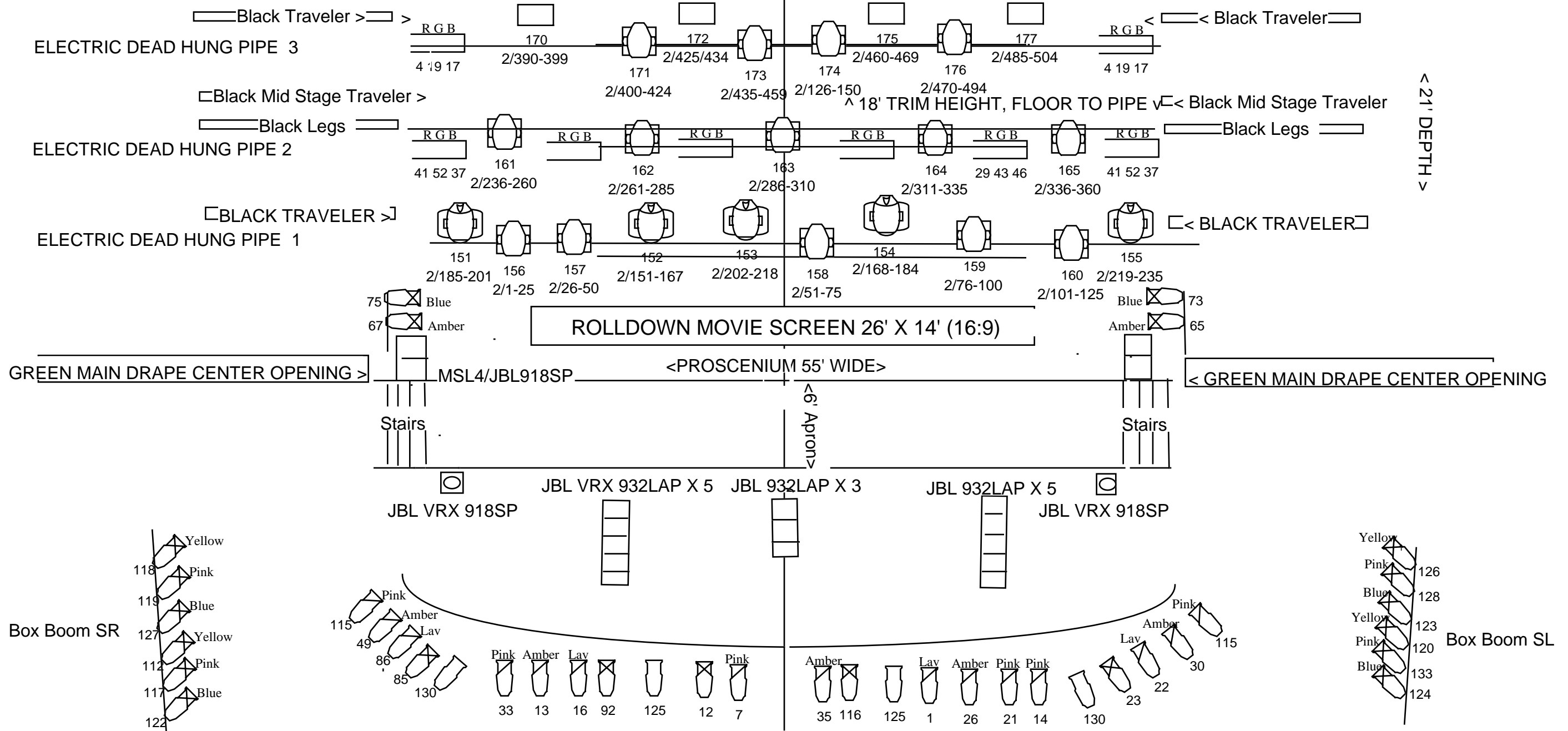


CROSS OVER
UPSTAGE FIXED MOVIE SCREEN/CYC 45' X 20'



21' DEPTH

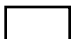
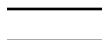



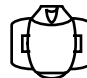
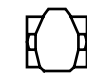
GREEN MAIN DRAPE CENTER OPENING >

< GREEN MAIN DRAPE CENTER OPENING

FOH

Century Village Pembroke Pines, Repertory Plot

REVISED 1/19

-  = Altman Spectra Cyc 200
-  = RGB 6' Altman R-40 Border
-  = Source 4 19 Degree
-  = Source 4 26 Degree
-  = Source 4 36 Degree
-  = Martin 350Entour
-  = Martin AURA
- Relay = 5, 6, 39, 40
- House 134-136, 139-144
- ALL Source 4 HPL 750X